



## Collaborative Efforts in Health Care Workforce Data Collection

Kelley Ilic  
Mary Rita Hurley, MPA, RN

---

---

---

---

---

---

---

---



## Objectives

- The learner will be able to identify the benefits and challenges of a collaborative, multi-profession approach to workforce data collection
- The learner will understand how to access recently collected data for their region.

---

---

---

---

---

---

---

---



## The O's



[www.oregoncenterfornursing.org](http://www.oregoncenterfornursing.org)

Oregon Healthcare  
Workforce Institute



[www.oregonhwi.org](http://www.oregonhwi.org)

---

---

---

---

---

---

---

---

**OCN**  
Oregon Center for  
NURSING

## The History



- 2002 - OCN incorporated
- 2005 - OHWI incorporated
- 2007 - Senate Bill 4
- 2008 – Health Care Reform Subcommittee Directive
- 2009 - House Bill 2009

---

---

---

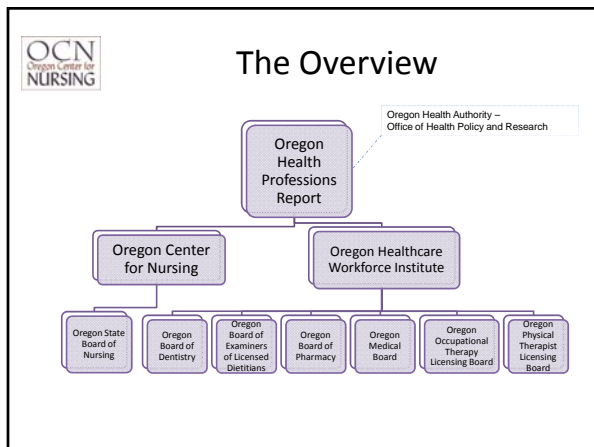
---

---

---

---

---



---

---

---

---

---

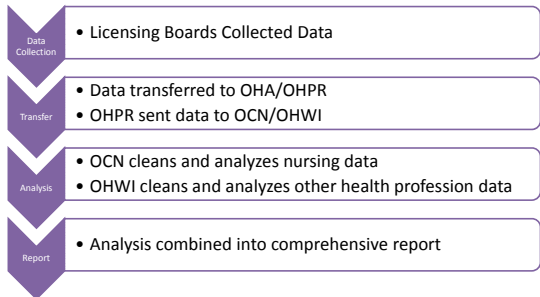
---

---

---

**OCN**  
Oregon Center for  
NURSING

## The Process



- Data Collection**
  - Licensing Boards Collected Data
- Transfer**
  - Data transferred to OHA/OHPR
  - OHPR sent data to OCN/OHWI
- Analysis**
  - OCN cleans and analyzes nursing data
  - OHWI cleans and analyzes other health profession data
- Report**
  - Analysis combined into comprehensive report

---

---

---

---

---

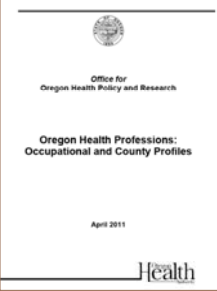
---

---

---

**OCN**  
Oregon Center for  
**NURSING**

## Oregon Health Professions Report



- 7 Boards
- 17 Professions
- Inter-profession analysis
- Intra-profession analysis
- State-wide data
- County data

---

---

---

---

---

---

---

---

**OCN**  
Oregon Center for  
**NURSING**

## It's a great doorstep, but what else can it do?



- Target resources
- Inform program expansion
- Identify distribution gaps
- Address health disparities
- Assist in disaster planning

---

---

---

---

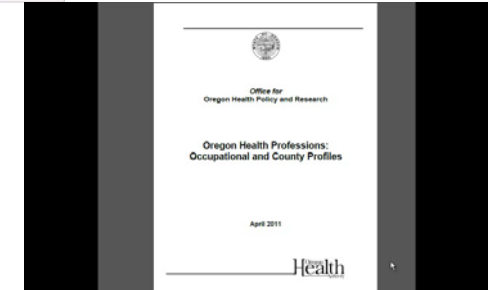
---

---

---

---

**OCN**  
Oregon Center for  
**NURSING**



Office for  
Oregon Health Policy and Research

Oregon Health Professions:  
Occupational and County Profiles

April 2011

Health

---

---

---


---


---

---

---

---

 **What's Next?**



- Additional Boards are being added on a voluntary basis
- On-line survey
- Begin trending data

---

---

---

---

---

---

---

---



- Mary Rita Hurley, RN, MPA  
Executive Director  
Oregon Center for Nursing  
[hurleym@up.edu](mailto:hurleym@up.edu) or 503-943-7150  
[www.oregoncenterfornursing.org](http://www.oregoncenterfornursing.org)
- Jo Isgrigg, PhD  
Executive Director  
Oregon Healthcare Workforce Institute  
[jo@oregonhwi.org](mailto:jo@oregonhwi.org) or 503-479-6002  
[www.oregonhwi.org](http://www.oregonhwi.org)


---

---

---

---

---

---

---

---